

source

THE CORPORATE DEVELOPMENT NEWSLETTER

Issue 4
Summer 2009



LOTTERY SUCCESS

The College is part of an Enable Scotland led partnership which has secured funding of £1,328,920 from the Big Lottery Fund. The partnership submitted an application that has created five new jobs to support students with learning disabilities who face multiple barriers to employment (one will be based in Coatbridge College). Entitled 'Transitions to Employment', the project will use funding over a five year period to support individuals (aged 16+) to gain jobs in the vocational area of their choice.

The partnership consists of Enable Scotland, Coatbridge, Reid Kerr, John Wheatley, Langside and James Watt Colleges. Each partner will benefit from the expertise of an Employment

Development Worker who will be based within the College. Lyn Gilliland of the Supported Learning department currently provides this service for the colleges' Employability students and has welcomed the assistance!

Lyn said: 'Through my work related to the Employability course I have recognised the opportunities for employment within our community for students with additional needs.'

Working in partnership with an Employment Development worker will greatly enhance the opportunities for many more students in our Foundation and Development courses. I look forward to many more achievements.'



TRANSVERSAL STUDY PROGRAMME

The Transversal Study Programme is part of the European Union's Lifelong Learning Programme and is open to individuals who have a decision-making or specialist role within general education or vocational training. Study visits allow individuals to learn about new practices and approaches in education, exchange expertise and network with other EU professionals.

The Corporate Development Team has secured a grant to allow Francis McGeachie, Head of Learner Services, to participate in a study visit being held in Bonn, Germany from 7th – 11th June 2009. The topic for the study visit is the German Vocational Education System, and Francis will be joined by 12 other specialists from eight different European nations.



For further information on the study visit programme, visit www.transversal.org.uk

RECENT CHANGES

There have been recent changes within Corporate Development. The section is led by Derek Banks, Director of Finance and now consists of Corporate Development and Commercial Development.

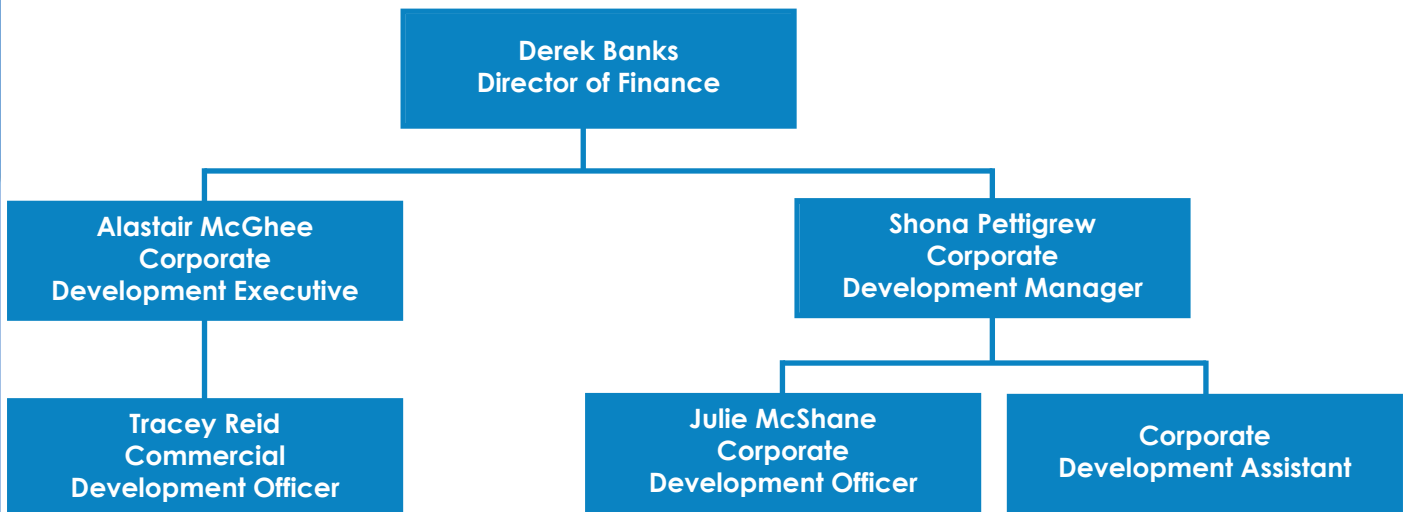
CORPORATE DEVELOPMENT TEAM

Shona Pettigrew, Corporate Development Manager, and Julie McShane, Corporate Development Officer are responsible for all non-commercial funding activities. There is also a Corporate Development Assistant, Marie O'Neill, who provides admin support to the team.

COMMERCIAL DEVELOPMENT TEAM

Alastair McGhee, Corporate Development Executive, and Tracey Reid, Commercial Development Officer, are responsible for all commercial funding activities.

ORGANISATIONAL CHART



SUCCESS!

The Corporate Development Team have successfully secured £313,037 in ESF funding for three new projects, which will be delivered during the 2009 – 2010 period.

Under ESF Priority One, funding has been secured to deliver vocational training to 138 individuals furthest from the labour market who have additional learning support needs.

Our ESF Priority Two project concerns up-skilling workers in the Care sector. A programme of evening and weekend activities will be delivered to over 200 employees of local care organisations to provide them with the softer skills and under-pinning knowledge required to care for someone in their own home.

Finally, our ESF Priority Three project will be delivered in partnership with Langside College. The project will develop a suite of new innovative online learning scenarios. These will eventually be used as a hook to engage young people in Sciences and sign-post them to a number of career options. Learning scenarios will be based on the popular TV shows ER and CSI.





Picture (L - R): Doreen Barrett and Clare Flynn with French colleagues Christiane, Rita and Genevieve

COLLEGE STAFF VISIT FRANCE

Three members of staff, Clare Flynn, Dorene Barrett and Shona Pettigrew, recently undertook an Erasmus funded Staff Training Visit to meet with new partners, ITEC Boisfleury, in Grenoble, France.

During the week-long visit, they were given the opportunity to meet senior staff members from the organisation, learn about the French educational system, work with English language students, and explore opportunities for possible future partnership.

Many interesting ideas were discussed, and it is hoped that during a visit to Scotland by our French colleagues in October 2009, plans for future partnership projects can be consolidated.



STUDENTS VISIT LITHUANIA

HND Beauty Therapy students Vicky Bingham and Alison Wallace, as part of the College's involvement in the ERASMUS work placement programme, flew to Lithuania to enhance their experience in the beauty industry. Vicky and Alison flew to the European country to work in a Beauty Salon and experience the day to day activities carried out by a Beauty Therapist.

'The Erasmus programme offers our students a fantastic opportunity to enhance their career prospects and broaden their life experience. The students and staff involved gain a better understanding of working practices in other cultures and are able to return with knowledge that can ultimately benefit their learning experience.'

John Doyle



Beauty Therapy students Vicky and Alison working in a Lithuanian Beauty Salon

SKILLS DEVELOPMENT SCOTLAND

Funding of £167,773 for 2009-10 was secured by the CDT for the fifth successive year with Skills Development Scotland (SDS). The National Training Programme allows employed dental nurses aged 16-19 years the opportunity to study for the (MA) Level 3 in Oral Health Care Dental Nursing.

Due to the Dental Section's proficient delivery/retention of 32 new trainees together with existing trainees on the MA programme, the College maximised £228,173 from a previous SDS contract. SDS funding has been instrumental in ensuring dental nurses gain a professional qualification and articulate to the many post qualifications available. From June 2008 to February 2009 44 trainees successfully achieved certification in the MA Level 3 Oral Health Care Dental Nursing.

On 24th April 2009 a compliance visit was carried out by SDS and we are delighted to report that no issues arose. Well done and many thanks to those involved.

COMMERCIAL DEVELOPMENT

LAUNCH OF BUSINESS SOLUTIONS

The 11th of June will see the public launch of Business Solutions, the brand for the College's commercial development activities. This event will take place at the Lanarkshire Chamber of Commerce business lunch, where around 100 local employers will hear how the College plans to engage with them to meet their training and business needs. The President of the Scottish Chambers of Commerce, Liz Cameron, will provide a keynote address, emphasising the importance of Further Education and how it can help businesses develop.



NEW PRODUCTS

Coatbridge College already offers some great products to business customers throughout Lanarkshire and colleagues are working hard to see how these can be developed to further improve our customer service. We have recently been provisionally approved to deliver the HACCP for Caterers and Elementary Food Hygiene courses offered by the Royal Environmental Health Institute of Scotland (REHIS), allowing us to be more responsive to customer needs.

FEEDBACK

We would welcome any comments or suggestions you may have on how to improve the newsletter, or queries you may have regarding content.

Please contact Julie McShane, jmcshane@coatbridge.ac.uk with your feedback.

INTERNATIONAL DEVELOPMENT

There are tremendous opportunities for Scotland's Colleges to generate significant business from overseas customers. Governments and businesses throughout Europe, the Middle East and beyond value the expertise that colleges can provide in helping them to set up educational institutions, deliver training or educate students. We have been working closely with Scottish Development International (SDI) to better understand how to access this exciting and challenging marketplace. Part of this work will involve a workshop, to be run in the College, specifically aimed at identifying appropriate opportunities and providing development staff within the College with the skills needed to realise these opportunities.

NEW IDEAS

The Commercial Development team welcomes any ideas from colleagues throughout the College about new opportunities, product ideas or potential customers. Please contact either Alastair by emailing amcghee@coatbridge.ac.uk (ext 2210) or email Tracey at treid@coatbridge.ac.uk (ext 2225).

Contact Us

Corporate Development - Upper Mezzanine Floor

Shona Pettigrew

Ext. 2290

spettigrew@coatbridge.ac.uk

Julie McShane

Ext. 2349

jmcshane@coatbridge.ac.uk

Marie O'Neill

Ext. 2224

moneill@coatbridge.ac.uk

Commercial Development - Upper Mezzanine Floor

Alastair McGee

Ext. 2210

amcghee@coatbridge.ac.uk

Tracey Reid

Ext. 2225

treid@coatbridge.ac.uk

This publication is available
in text only format.

